



CATALOG NUMBER:
KT-RKIT-2AG22-2500-930-VDIM



DESCRIPTION

UL 1598C Classified LED Retrofit Kit. Includes the Following Components:

(1) LED Driver, (2) Alumagroove LED Modules, (2) Lenses, Mounting Accessories (Jumper Wires, Tek Screws, Power Quick-Disconnect)



RoHS Compliant

10YEAR
WARRANTY

APPLICATION

Suitable for use in Troffers, Wraps, Strips, Vapor Tights, and other indoor fixture types.

PRODUCT FEATURES

Module Features

- For Use In Class 2 Lighting Systems
- High Lumen Density Design
- Completely Heat Sunked, No Additional Heat Sinking Needed to Maintain LED Lifetime
- Made with UL Recognized Components
- 2835 LED Chip Package
- Reported Life Expectancy: L70 >54,000 Hours at 85C | L90 48,000 Hours at 85C
- Calculated Life Expectancy: L70>160,000 Hours at 85C | L90 48,000 at 85C
- Beam Angle: 120 Degree
- Low Profile WAGO Push Connectors Located on Bottom of Modules to Eliminate Dark Spots on End-to-End Connections

Driver Features

- 120-277V Input, High Power Factor, 0-10V Dimming
- UL Class P
- Meets FCC Part 15 Class B (Consumer) Limit for EMI
- Over Current and Short Circuit Protection
- Class 2 Output
- Operating Temperature: -20C/-4F to 55C/131F
- THD < 20%
- DLC Listed



CATALOG NUMBER:
KT-RKIT-2AG22-2500-930-VDIM

PERFORMANCE SPECIFICATIONS

2' LINEAR KITS, 90 CRI

KIT SPECIFICATIONS:

Dimming Type: 0-10V

Driver: (1) KTLD-20-UV-650-VDIM-LA1

Module: (2) KTAG-22L-700-30-9xx-RJ

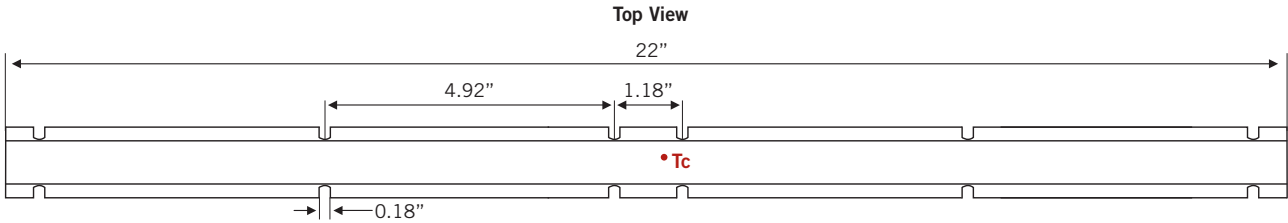
Color Temp	Input Voltage	CRI	AlumaGroove Kit Catalog Number	No. of Modules	Total System Drive Current	Drive Current per Module	Total System Lumens	Total Module Power	Module Efficacy	Driver Efficiency	Total System Power	Total System Efficacy
3000K	120-277V	>90	KT-RKIT-2AG22-2500-930-VDIM	2	650mA	325mA	2462	18W	134 lm/W	84%	22W	113 lm/W

ACCESSORIES

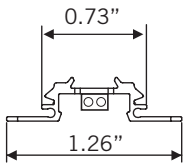
Lens	KTAG-22L-LENS
------	---------------

NOTE: Included

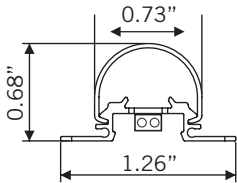
PHYSICAL SPECIFICATIONS



Side View

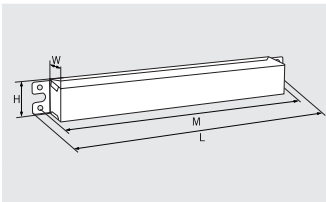


Without Lens



With Lens

CASE DIMENSIONS



LENGTH	6"
WIDTH	1.3"
HEIGHT	1.1"
MOUNTING	5.7"
CASE STYLE	LA1



FUTURE FIT[®]
LED KITS

CATALOG NUMBER:
KT-RKIT-2AG22-2500-930-VDIM

ORDERING INFORMATION

ORDER CODE	PACKAGING STYLE	PACK QTY.	ITEM STATUS
KT-RKIT-2AG22-2500-930-VDIM	Individually Packaged	20	Quick Ship

CATALOG NUMBER BREAKDOWN

KT-RKIT-2AG22-2500-930-VDIM

Keystone Technologies	Retrofit Kit	Number of Modules	Aluma Groove	Nominal Length (In.)	Nominal Lumens	90 CRI	Color Temp	0-10V Dimmable
-----------------------	--------------	-------------------	--------------	----------------------	----------------	--------	------------	----------------