

KT-VTLED-45SM-1-KIT

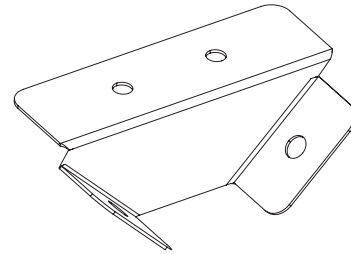
STEEL SURFACE MOUNT KIT

DESCRIPTION

45 degree steel surface mount kit | Includes 2 brackets and mounting hardware

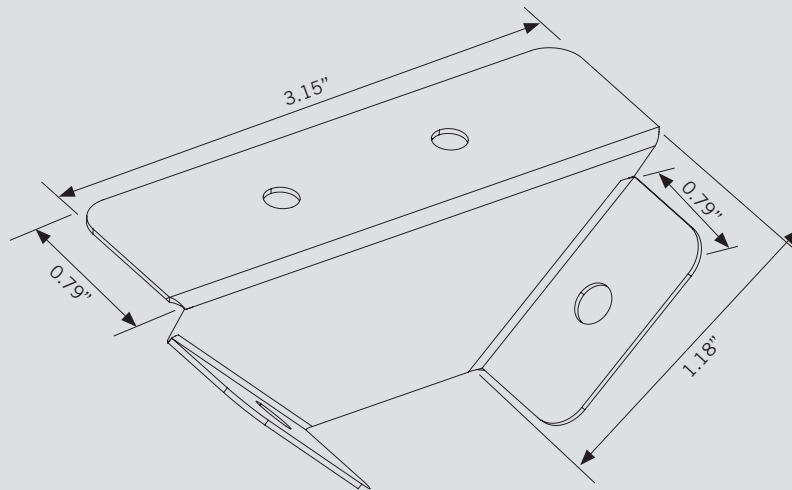
APPLICATION

45 degree angle for corner mount applications. For use with all Keystone LED Vapor Tight fixtures.



PHYSICAL SPECIFICATIONS

45 DEGREE BRACKET



INSTALLING MOUNTING BRACKETS

1. Using provided screws, attach the 45 degree bracket to the existing clips on the vapor tight fixture.

