

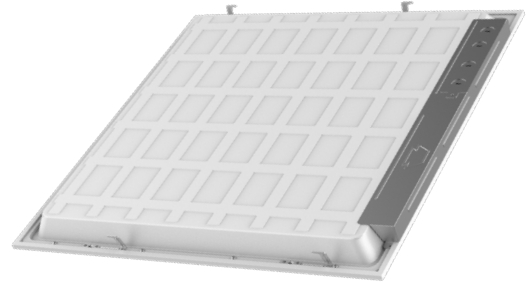


KT-BPLED30-22-8XX-VDIM

BACKLIT LED PANEL LIGHT

DESCRIPTION

2'x2' LED panel light, 30W, 120-277V input, 0-10V dimming



PRODUCT FEATURES

- Aluminum frame featuring stepped edge design detail and gloss white paint for improved aesthetics
- New backlit style design; fits standard T-grid ceilings
- Suitable for recessed or surface mount (with optional accessories)*
- Construction features precise optical lenses over each individual LED, offering optimal light diffusion and consistent surface illumination, with no risk of yellowing over product lifetime
- Suitable for damp locations
- Powered by Keystone 0-10V dimmable LED driver with built-in junction box
- Compatible with Keystone SmartSafe LED emergency backup
- Over 50% energy savings compared to traditional fluorescent troffers
- Operating temp range -20°C/-4°F to 40°C/104°F

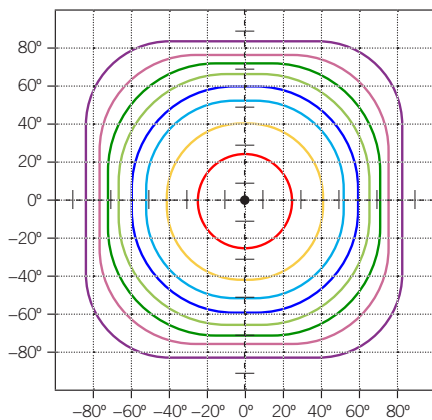
* For use in non-fire rated installations only

PERFORMANCE SPECIFICATIONS

Catalog Number	Input Voltage	Wattage	Color Temperature	Lumen Output	CRI	Power Factor	Efficacy	Lifetime
KT-BPLED30-22-835-VDIM	120-277V	30W	3500K	3,300	>80	>0.9	110 lm/W	50,000 Hours
KT-BPLED30-22-840-VDIM	120-277V	30W	4000K	3,300	>80	>0.9	110 lm/W	50,000 Hours
KT-BPLED30-22-850-VDIM	120-277V	30W	5000K	3,300	>80	>0.9	110 lm/W	50,000 Hours

PHOTOMETRIC SPECIFICATIONS

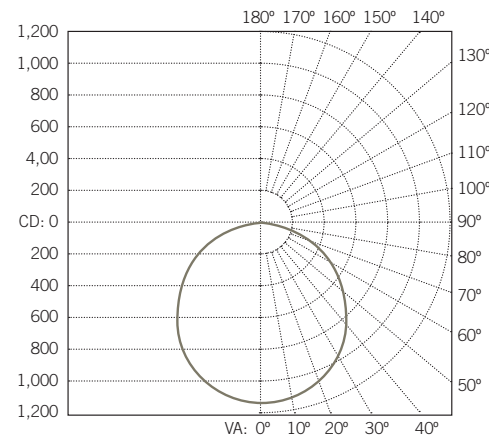
ISOCANDELA PLOT



■ Cd: 992, 90%	■ Cd: 441, 40%
■ Cd: 826, 75%	■ Cd: 331, 30%
■ Cd: 661, 60%	■ Cd: 220, 20%
■ Cd: 551, 50%	■ Cd: 110, 10%

----- Point of Max Cd: 1,103.3

POLAR CANDELA DISTRIBUTION



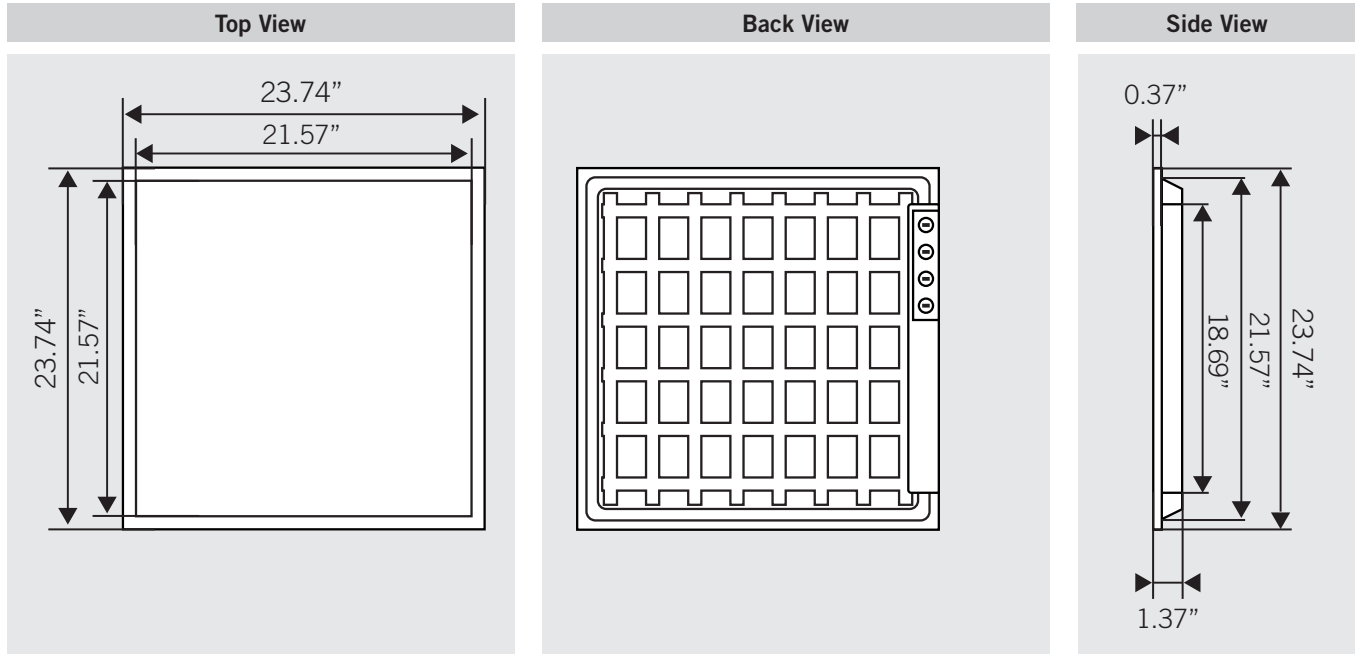
■ 0° H
■ 90° H
■ 22.5° H
■ 45° H
■ 67.5° H

ZONAL LUMEN SUMMARY

Zone	Lumens	% Luminaire
0-30	860.5	26.5%
0-40	1,414.7	43.5%
0-60	2,521.6	77.6%
60-90	720.9	22.2%
70-100	313.0	9.6%
90-120	3.0	0.1%
0-90	3,242.5	99.8%
90-180	6.5	0.2%
0-180	3,249.0	100%

KT-BPLED30-22-8XX-VDIM
BACKLIT LED PANEL LIGHT

PHYSICAL SPECIFICATIONS

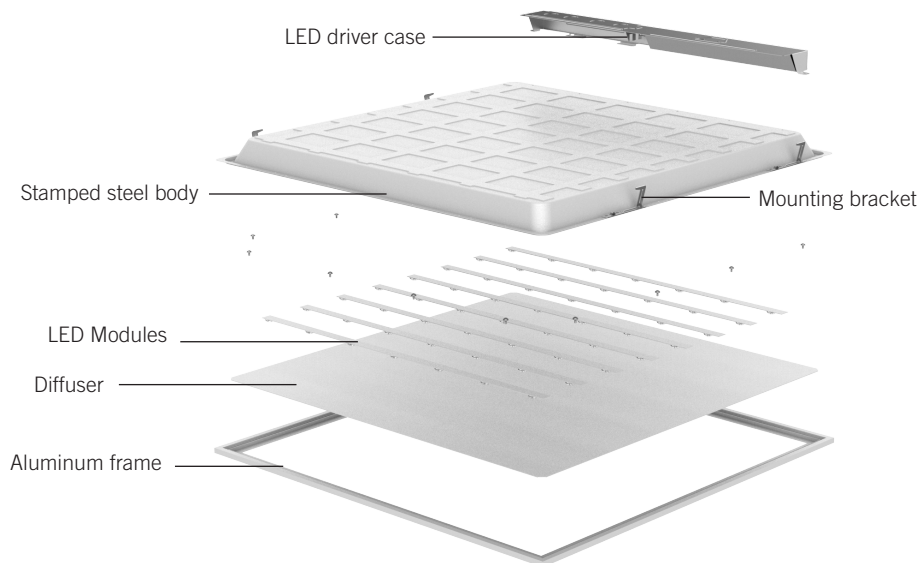


WEIGHT INFORMATION

1 Piece	1 Carton
6.2 lbs	12.4 lbs

EXPLODED VIEW

CONSTRUCTION FEATURES





KT-BPLED30-22-8XX-VDIM

BACKLIT LED PANEL LIGHT

WIRELESS CONTROL OPTIONS

Brand / System	Description	Ordering Number
Lutron Vive	FCJS-010 Wireless 0-10V fixture controller; 1A Max load; factory installed	KT-BPLED30-22-8XX-VDIM /FCJS0



ACCESSORIES (SOLD SEPARATELY)

Accessory	Catalog Number	Description
Emergency Battery Backup Mounting Kit	KT-BPLED-EM-22/4-KIT	Mounting Bracket for SmartSafe LED emergency backup for 2x2 and 2x4 backlit panels
Surface Mount Kit	KT-BPLED-SM-22-KIT	Surface Mount Kit 2x2 Backlit panels
J-Box	KT-BPLED-JBOX-1	Larger J-Box add-on for LED Backlit Panels, DLC Standard

ORDERING INFORMATION

CATALOG NUMBER	CARTON QTY.	EASY CODE	UPC
KT-BPLED30-22-835-VDIM	2	843654127712	RKL-49
KT-BPLED30-22-840-VDIM	2	843654127729	HBI-18
KT-BPLED30-22-850-VDIM	2	843654127736	NMI-68

CATALOG NUMBER BREAKDOWN

KT-BPLED30-22-8XX-VDIM

1
2
3
4
5
6
7

- 1** Keystone Technologies
- 2** Backlit Panel Light LED Fixture
- 3** Wattage
- 4** 2' x 2' Nominal Size
- 5** 800 Series
- 6** Color Temperature
- 7** 0-10V Dimming