

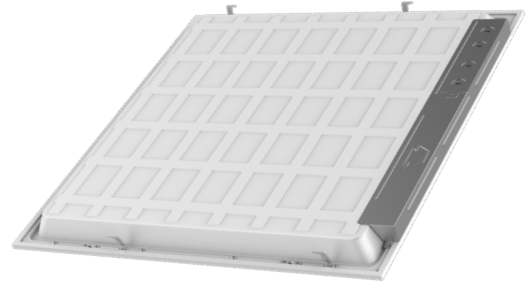


KT-BPLED40-22-8XX-VDIM

BACKLIT LED PANEL LIGHT

DESCRIPTION

2'x2' LED panel light, 40W, 120-277V input, 0-10V dimming



PRODUCT FEATURES

- Aluminum frame featuring stepped edge design detail and gloss white paint for improved aesthetics
- New backlit style design; fits standard T-grid ceilings
- Suitable for recessed or surface mount (with optional accessories)*
- Construction features precise optical lenses over each individual LED, offering optimal light diffusion and consistent surface illumination, with no risk of yellowing over product lifetime
- Suitable for damp locations
- Powered by Keystone 0-10V dimmable LED driver with built-in junction box
- Compatible with Keystone SmartSafe LED emergency backup
- Over 50% energy savings compared to traditional fluorescent troffers
- Operating temp range -20°C/-4°F to 40°C/104°F

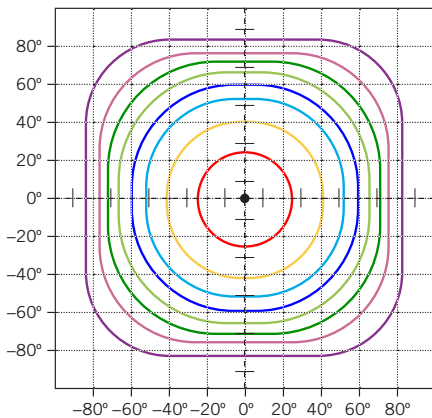
* For use in non-fire rated installations only

PERFORMANCE SPECIFICATIONS

Catalog Number	Input Voltage	Wattage	Color Temperature	Lumen Output	CRI	Power Factor	Efficacy	Lifetime
KT-BPLED40-22-835-VDIM	120-277V	40W	3500K	4,400	>80	>0.9	110 lm/W	50,000 Hours
KT-BPLED40-22-840-VDIM	120-277V	40W	4000K	4,400	>80	>0.9	110 lm/W	50,000 Hours
KT-BPLED40-22-850-VDIM	120-277V	40W	5000K	4,400	>80	>0.9	110 lm/W	50,000 Hours

PHOTOMETRIC SPECIFICATIONS

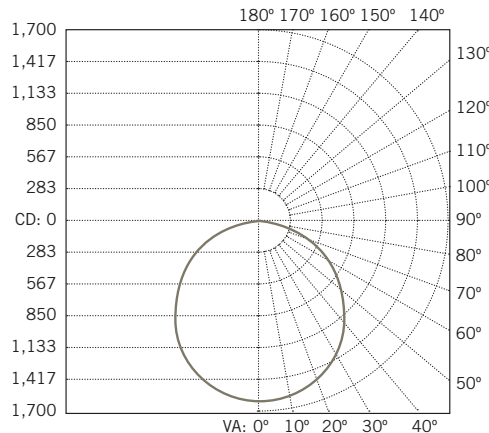
ISOCANDELA PLOT



■ Cd: 1,467, 90%	■ Cd: 652, 40%
■ Cd: 1,222, 75%	■ Cd: 489, 30%
■ Cd: 978, 60%	■ Cd: 326, 20%
■ Cd: 815, 50%	■ Cd: 163, 10%

----- Point of Max Cd: 1,103.3

POLAR CANDELA DISTRIBUTION



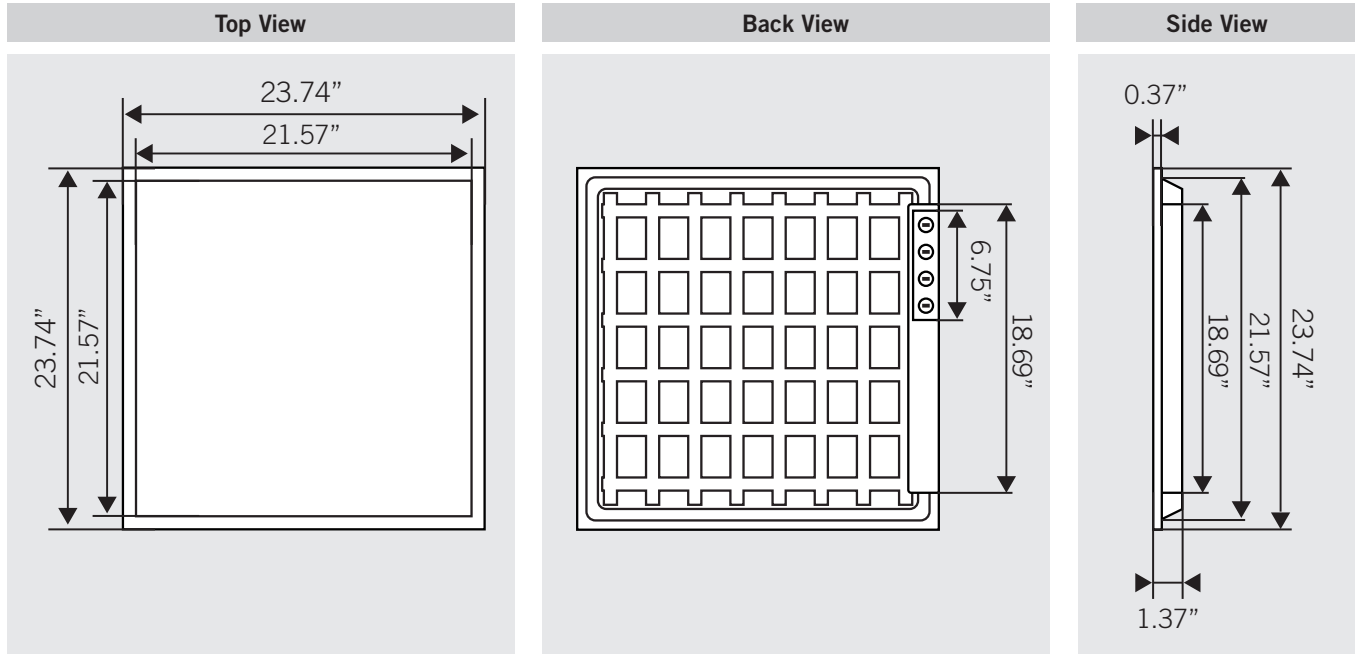
■ 0° H
■ 90° H
■ 22.5° H
■ 45° H
■ 67.5° H

ZONAL LUMEN SUMMARY

Zone	Lumens	% Luminaire
0-30	1,269.5	26.7%
0-40	2,084.2	43.8%
0-60	3,704.9	77.8%
60-90	1,043.4	21.9%
70-100	450.5	9.5%
90-120	5.4	0.1%
0-90	4,748.3	99.7%
90-180	12.0	0.3%
0-180	4,760.4	100%

KT-BPLED40-22-8XX-VDIM
BACKLIT LED PANEL LIGHT

PHYSICAL SPECIFICATIONS

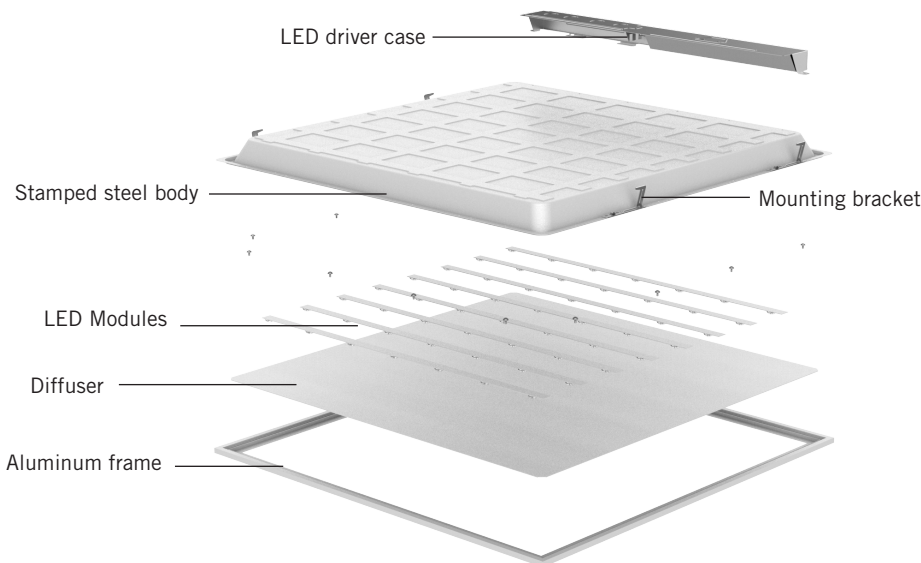


WEIGHT INFORMATION

1 Piece	1 Carton
6.2 lbs	12.4 lbs

EXPLODED VIEW

CONSTRUCTION FEATURES





KT-BPLED40-22-8XX-VDIM

BACKLIT LED PANEL LIGHT

WIRELESS CONTROL OPTIONS

Brand / System	Description	Ordering Number
Lutron Vive	FCJS-010 Wireless 0–10V fixture controller; 1A Max load; factory installed	KT-BPLED40-22-8XX-VDIM /FCJS0



ACCESSORIES (SOLD SEPARATELY)

Accessory	Catalog Number	Description
Emergency Battery Backup Mounting Kit	KT-BPLED-EM-22/4-KIT	Mounting Bracket for SmartSafe LED emergency backup for 2x2 and 2x4 backlit panels
Surface Mount Kit	KT-BPLED-SM-22-KIT	Surface Mount Kit 2x2 Backlit panels
J-Box	KT-BPLED-JBOX-1	Larger J-Box add-on for LED Backlit Panels, DLC Standard

ORDERING INFORMATION

CATALOG NUMBER	CARTON QTY.	EASY CODE	UPC
KT-BPLED40-22-835-VDIM	2	BPG-16	843654127743
KT-BPLED40-22-840-VDIM	2	JVG-09	843654127750
KT-BPLED40-22-850-VDIM	2	ITY-63	843654127767

CATALOG NUMBER BREAKDOWN

KT-BPLED40-22-8XX-VDIM

1 **2** **3** **4** **5** **6** **7** **8**

- 1** Keystone Technologies
- 2** Backlit Panel Light LED Fixture
- 3** Wattage
- 4** 2' x 2' Nominal Size
- 5** 800 Series
- 6** Color Temperature
- 7** 0-10V Dimming
- 8** Sensor Options

8 Sensor Options

	No option
/FC1-PIR	Occupancy sensor included