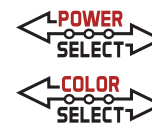




# XFIT



## KT-FLED290PS-R2X-UNV-8CSB-VDIM

### HIGH POWER FLOODLIGHT

#### DESCRIPTION

High Power Floodlight | Power Select | Color Select  
| 120-277V | 80 CRI | Bronze Housing

#### APPLICATION

Ground, pole, or building mount applications (parking lots, auto dealerships, building facades, signs, recreational venues, general area lighting)



**10 YEAR**  
LIMITED WARRANTY

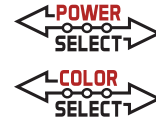
#### PRODUCT FEATURES

- Keystone Power Select technology (290/210W)
- Keystone Color Select technology (3000/4000/5000K)
- High power floodlight with innovative design based on established floodlight principles
- Die cast aluminum housing, with optional glare shield accessory (sold separately)
- Heavy duty, interchangeable slipfitter and trunnion mount options included
- Suitable for ground, pole, or building mount applications
- 3 pin twist lock photocell and shorting cap included with NEMA/ANSI C136.10 3 pin twist lock receptacle
- Precision-crafted optics lens with NEMA 7H x 6V, 6H x 6V, and 5H x 5V options available. See below chart for details.
- Keystone 0-10V dimming driver with 12V AUX power tap and 6kV surge protection
- Ambient operating temperature: -40°C/-40°F - 50°C/122°F
- UL and DLC listed, IP65 rated
- Power factor: > 0.95
- THD: < 20%
- LED chip lifetime: L70 > 100,000 hrs @ 25°C/77°F ambient fixture temperature
- Meets FCC Part 15, Part B, Class A standards for conducted and radiated emissions

#### PRODUCT SPECIFICATIONS

Catalog Number	Selectable Wattage	Selectable CCT	Lumen Output	Efficacy	Input Voltage	CRI	Dimming	Mounting	Dist Pattern	Photocell	Rated Life	Legacy Equivalent
KT-FLED290PS-R2B-UNV-8CSB-VDIM	290W	3000K	34800	120 lm/W	120 - 277V	>80	0-10V	Universal: 2 3/8" Slip Fitter or Trunnion	7H x 6V	Included	50,000 Hours	1000W MH
KT-FLED290PS-R2C-UNV-8CSB-VDIM		4000K	40600	140 lm/W					6H x 6V			
KT-FLED290PS-R2D-UNV-8CSB-VDIM	210W	5000K	37700	130 lm/W								
		3000K	27300	130 lm/W					5H x 5V			
		4000K	29400	140 lm/W								
		5000K	28350	135 lm/W								

\*Note: fixtures with 6H x 6V or 5H x 5V optics are assembled to order. Lead times may apply.

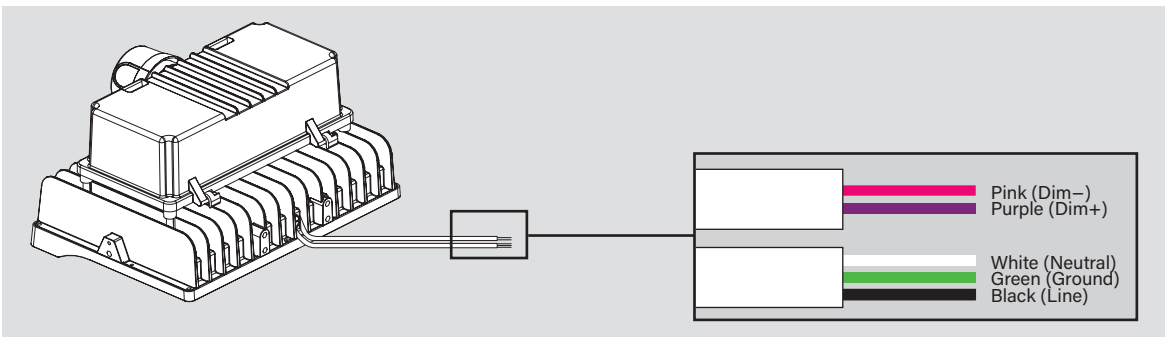
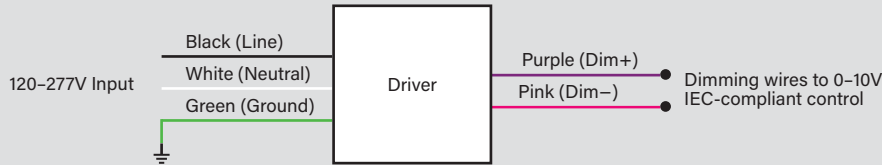


# KT-FLED290PS-R2X-UNV-8CSB-VDIM

## HIGH POWER FLOODLIGHT

### WIRING DIAGRAM

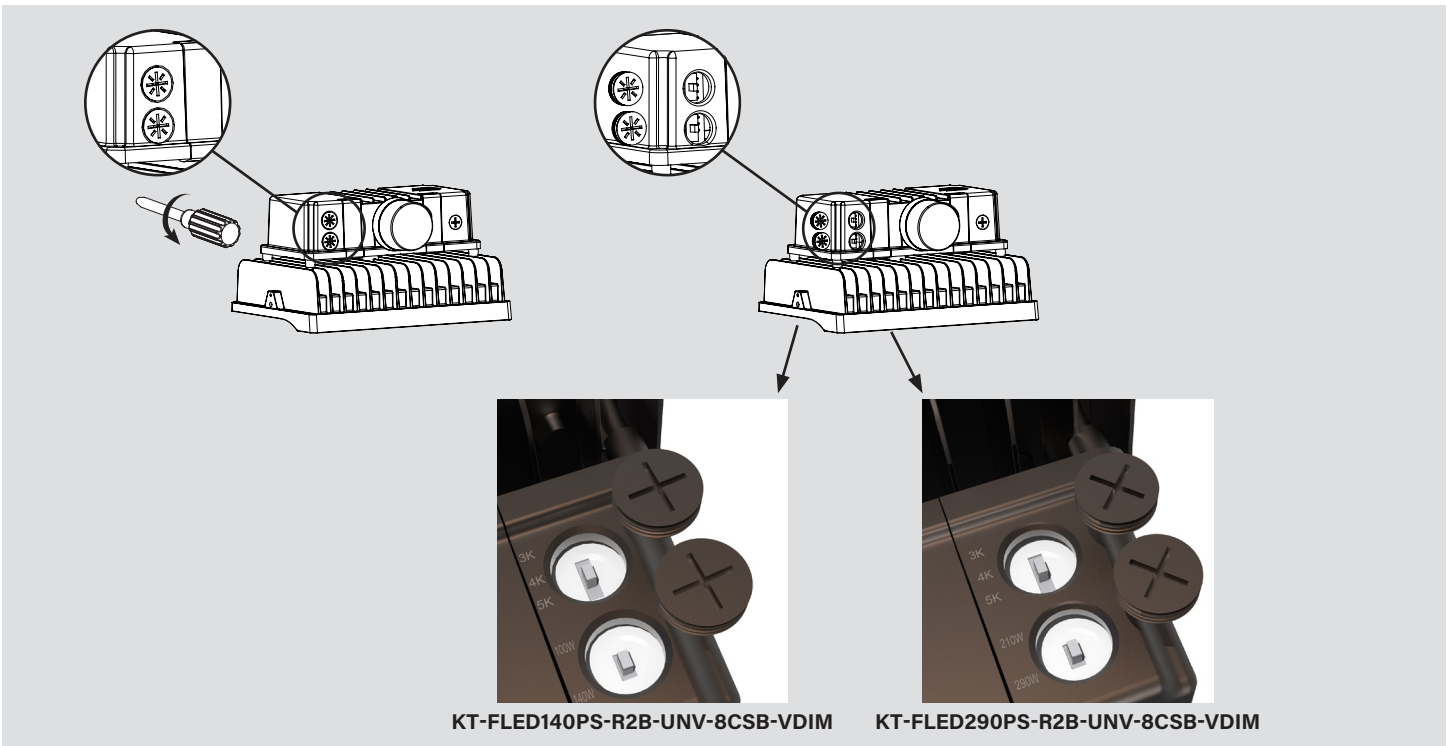
#### GENERAL WIRING DIAGRAM

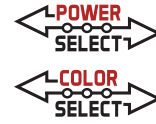


### POWER AND COLOR SELECT INSTRUCTIONS

This fixture is equipped with field-adjustable selectable wattage and selectable CCT technology.

1. Ensure power is off to the fixture.
2. Unscrew the gasketed caps from the back of the fixture as shown in the images below.
3. Adjust dip switches to desired settings.
4. Screw on gasketed caps.
5. Restore power to fixture.



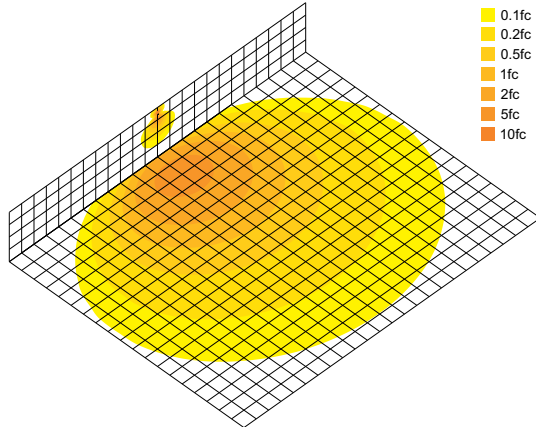


# KT-FLED290PS-R2X-UNV-8CSB-VDIM

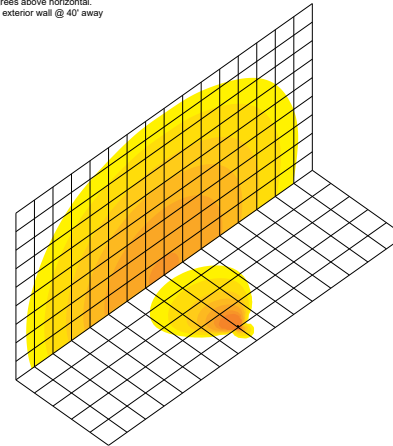
## HIGH POWER FLOODLIGHT

### PHOTOMETRICS

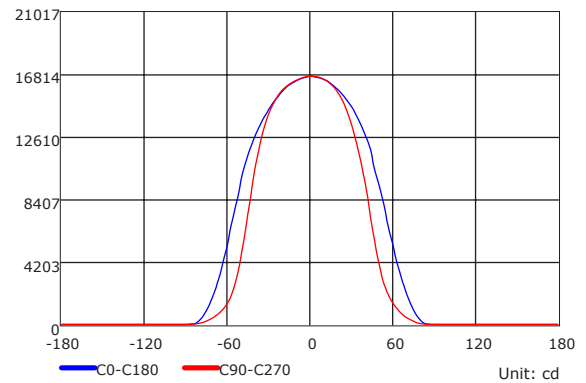
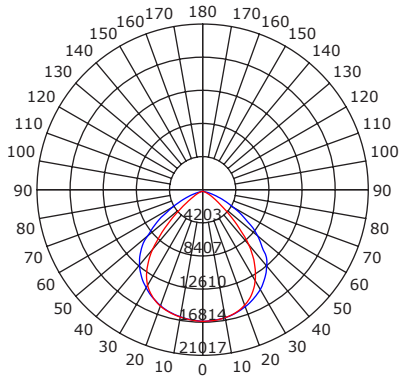
290W 5000K Building Mount: Building exterior mounted at 35', 30 degrees below horizon



290W 5000K Ground Mount: 6' above ground, 10 degrees above horizontal. Shining towards building exterior wall @ 40' away



### Luminous Intensity Distribution Curve

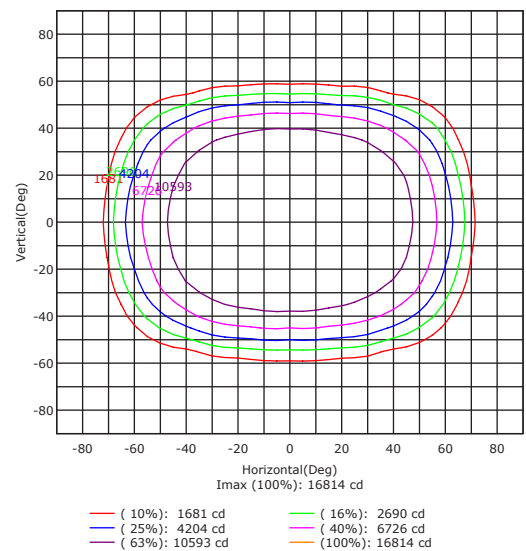


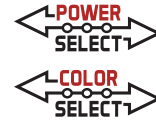
### Illuminance at a Distance

Dist(m)	Enadir(lx)	Dh/Dv_B(m)	S_B(sq.m)	Eav_B(lx)
1.0	16800.712	.65/1.85	4.03	767.45
2.0	4200.185	.30/3.71	16.1	941.86
3.0	1866.747	.95/5.56	36.1	418.61
4.0	1050.04	10.60/7.42	64.2	235.47
5.06	72.03	13.25/9.27	100.3	150.70
6.0	466.69	15.90/11.13	144.5	104.65
7.0	342.87	18.55/12.98	196.67	6.89
8.0	262.51	21.20/14.83	256.8	58.87
9.0	207.42	23.84/16.69	325.0	46.51
10.0	168.01	26.49/18.54	401.33	7.67

Dh Beam Angle(B): H105.9 V85.7 Field Angle(F): H143.3 V117.1

### Isocandela (Rectangle)





# KT-FLED290PS-R2X-UNV-8CSB-VDIM





## HIGH POWER FLOODLIGHT

### EPA SPECIFICATIONS

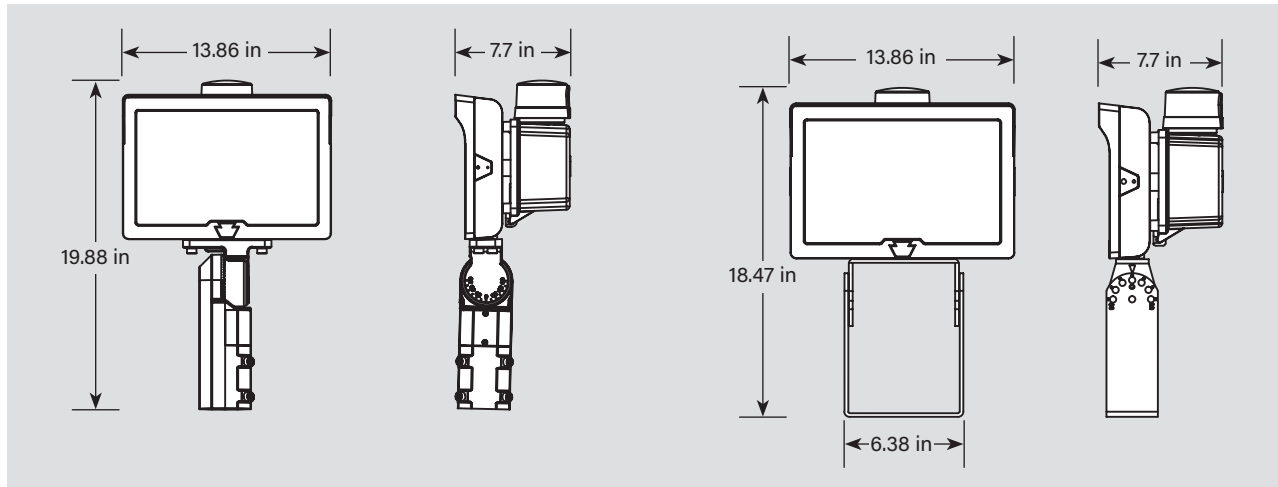
#### Small-Size Fixture Housing

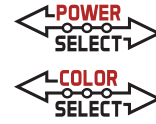
- Conditions: Horizontal winds only for calculations. Worst case total projected area used for calculations.
- All drag coefficients are set as worst case 1.2.
- For details on exact EPA calculations and assumptions, please contact [productsupport@keystonetech.com](mailto:productsupport@keystonetech.com)

EPA Calcs (1.2\*ft^2 | View)

Mounting Application	Fixture Position	Housing Size	Single Fixture	2 Fixtures at 90°	2 Fixtures at 180°
					
<b>Slip Fitter Mount</b> 	45°	L (290W)	1.139 sq. ft.	1.831 sq. ft.	1.384 sq. ft.

### PHYSICAL SPECIFICATIONS





# KT-FLED290PS-R2X-UNV-8CSB-VDIM

## HIGH POWER FLOODLIGHT

### ACCESSORIES

#### SENSORS

Field-Installable (Included)

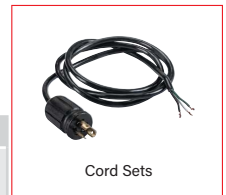
✓	SUFFIX	CATALOG NUMBER	DESCRIPTION	UPC	EASY CODE
	-	KT-TLP-UV-3PN	NEMA-Type 3-Pin Photocell; 120-277V; 1800VA Max	841654131825	NQT-46



#### CORD SETS

Factory-Installable OR Field-Installable (field-installable purchased separately)

✓	SUFFIX*	CATALOG NUMBER	DESCRIPTION	UPC	EASY CODE
	/515P6	KT-CS-515P-6-18/3	Cord set; 125V NEMA 5-15P; straight blade plug; 6' SJTOW cable; 18/3 wire	843654140124	UKH-26



\* For factory installation of accessory, add suffix to fixture part number (see ordering examples and instructions on last page of spec sheet).  
 Note: For cord sets not listed here, please contact your Keystone sales rep.

#### MOUNTS AND BRACKETS

Field-Installable / Field-Use ONLY (purchased separately)

✓	SUFFIX	CATALOG NUMBER	DESCRIPTION	UPC	EASY CODE
	/515P6	KT-FLED-GS-R2-2-KIT	Glare shield for 290W Fixture	843654138695	VCZ-14



### ORDERING INFORMATION

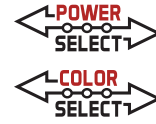
Catalog Number	UPC	Easy Code	DLC PRODUCT ID
KT-FLED290PS-R2B-UNV-8CSB-VDIM	843654138657	PFX-43	S-YOLFHA
KT-FLED290PS-R2B-UNV-8CSB-VDIM /TAA	843654158709	QWH-68	
KT-FLED290PS-R2C-UNV-8CSB-VDIM	843654145631	DJP-06	S-KZMCQ8
KT-FLED290PS-R2D-UNV-8CSB-VDIM	843654145662	SUV-63	S-5X14QJ

### CATALOG NUMBER BREAKDOWN

# KT-FLED290PS-R2X-UNV-8CSB-VDIM

1	2	3	4	5	6	7	8	9	10	11	12	13
<b>1</b> Keystone Technologies	<b>2</b> Floodlight LED	<b>3</b> Max Wattage	<b>4</b> Power Select	<b>5</b> Shape	<b>6</b> Style	<b>7</b> Distribution	<b>8</b> Mounting	<b>9</b> 80 CRI	<b>10</b> Color Select	<b>11</b> Color Select Designation	<b>12</b> 0-10V Dimming	<b>13</b> TAA Compliant*
				R	2	B	UNV			B		/TAA
				Rectangular	Series 2	NEMA 7H x 6V Beam Spread	Universal			3000/4000/5000K		Made in Mexico
						C						
						D						

\* Note: KT-FLED290PS-R2B-UNV-8CSB-VDIM is the only item available for TAA



# KT-FLED290PS-R2X-UNV-8CSB-VDIM

## HIGH POWER FLOODLIGHT

**ORDERING EXAMPLES**

**FIXTURE WITH SINGLE FACTORY-INSTALLED ACCESSORY**  
**KT-FLED290PS-R2X-UNV-8CSB-VDIM /515P6**

**FIXTURE WITH NO FACTORY-INSTALLED ACCESSORIES**  
**KT-FLED290PS-R2X-UNV-8CSB-VDIM**

*\* When ordering more than one factory-installed accessory, use multiple suffixes as shown in the ordering examples above.  
 Note: All accessories can also be ordered separately for field installation using just their regular Catalog Number, UPC, or Easy Code.*

KEYSTONE FIXTURE	
CATALOG NUMBER	
KT-FLED290PS-R2X-UNV-8CSB-VDIM	
SENSORS	
✓ SUFFIX	CATALOG NUMBER
✓ /3PN	KT-TLP-UV-3PN
CORD SETS	
✓ SUFFIX	CATALOG NUMBER
✓ /515P6	KT-CS-515P-6-18/3